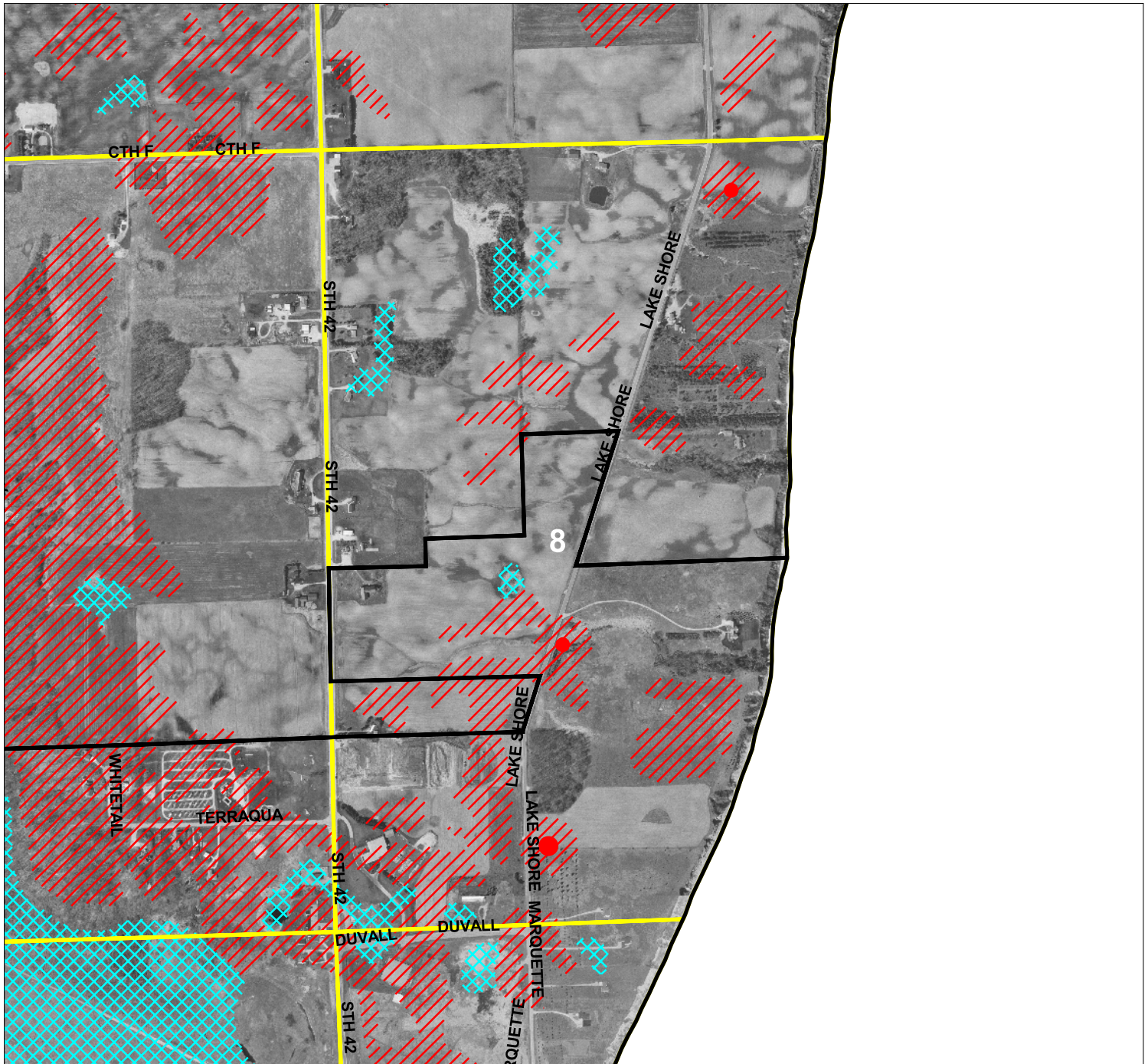
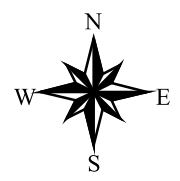
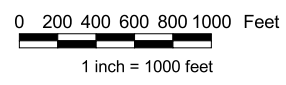


Manure Spreading Hazard Area Map



- No manure spreading at any time.
- No manure spreading when soils are frozen, snow-covered, or saturated.
- Refer to section V., part B., of the USDA-NRCS 590 standard.
- Due to potential groundwater contamination concerns it is strongly recommended by the Kewaunee County LWCD that no manure be applied to these areas from February 1st until the spring melt / runoff has ended.

Township _____



Attention!

These maps may not depict all of the current requirements in USDA-NRCS standard 590 (Nutrient Management).

Information on this map is limited to what is currently available in Kewaunee County's geographic information system (GIS) and may be periodically updated.

NOTE: Manure can never be spread in grassed waterways, non-farmed wetlands, established buffers, drainage ditches, road ditches, sinkholes, bedrock fractures, tile inlets, or areas within 50 feet of a well. Manure can also never be spread on frozen, snow-covered, or saturated soils that are within 200 feet of a well, sinkhole, grassed waterway, drainage ditch, road ditch, bedrock fracture, or tile inlet.