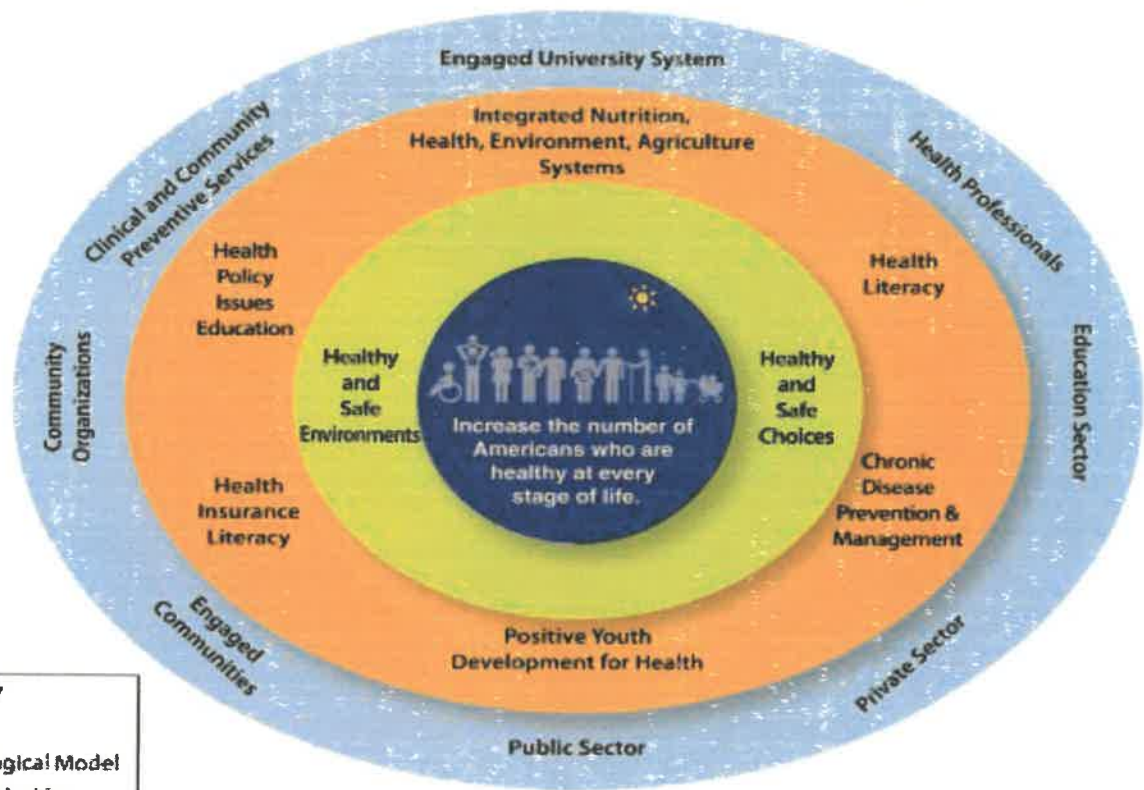


**MINUTES**  
**Agriculture & Extension Education Committee Meeting**  
**810 Lincoln St, Kewaunee, WI**  
**Wednesday, January 2, 2019. 8:30 AM**

**MINUTES**

1. Call to Order - Meeting called to order by Chairman Tom Romdenne at 8:30 AM
2. Roll Call - Committee members present: Tom Romdenne, Gary Paape, Mary-Ellen Dobbins, Chuck Wagner. Educators present: Aerica Bjurstrom, Renee Koenig. Also present: Rob Burke, Area Extension Director.
3. Motion by Dobbins second by Paape to approve the agenda and approve Minutes of December 12, 2018 with the change (remove 'y' from 'difficulty') noted by Supervisor Wagner. All aye, motion carried.
4. Citizen Input – none
5. Dog Damage – nothing to report.
6. Educators Reports, discussion:
  - a. Aerica reviewed grant project that will be coming before the full board. Master Gardener classes starting the end of January to the end of May, 13 classes. \$125 fee for all. All information is on our website, there are many good guest speakers lined up. Aerica noted a publication being released of a study by John Schutke on Rural Broadband and how farmers utilize it.
  - b. Renee reviewed Cooperative Extension's national framework for Health and Wellness, illustrating how our programming in Kewaunee County fits into the framework. See the framework schematic diagram, below.
  - c. Renee also noted that her title (now previous title) of Family Living Educator title "Family Living Educator" has been changed to "Human Development & Relationship Educator" by University leadership under the new Extension Model.
7. Department Head/Area Director Report – Burke reported that as part of the merger with Madison our Extension logo, formal name, will be changing in the months to come.
8. Travel Requests – Nothing to consider
9. Future Meetings: February 13, 2019. March 6, 2019. 8:30 AM both meetings.
10. Motion by Paape, second by Wagner, to adjourn. All aye. Meeting adjourned at 9:05 AM.

# Cooperative Extension's National Framework for Health & Wellness



**KEY**

- Outcome
- Social-Ecological Model
- Extension Priorities
- Partners

-----